



**INCORPORATED**  
Precision Industrial System  
SENSOR MANUFACTURER



# D-2 Incorporated

JP-8 Fuel Additive  
Injection System  
MIL-DTL-83133  
SDA / CI / FSII

Part Number: AI-JP-8  
Revision 1: 05/09/19  
Drawing Number: JP-8 Product Brochure



### General Features of the D-2 Injection Systems

1. Real Time Control of Neat Additive injection for SDA, CI, or FSII. Modular design allows for all three additives or any combination in the same cost effective package.
2. Ensures your facility is meeting the MIL-DTD-83133 specification for Static Dissipative Additive (SDA) / Corrosion Inhibitor (CI) and Fuel System Icing Inhibitor (FSII).
3. System can be tied directly into a DCS system such as “Top Tech” or “Guardian” fuel terminal management software. Allows for standard terminal operator oversight. As required BOL printed results.
4. Uses only NEAT Additive for injection, eliminating the need for additive dilution and mixing prior to injection. Full mass flow real time control based on product line flow rate.
5. Full documentation package provided with every skid, including PI&D’s, foundation, sensor /injector mounts, installation/check off manual, user manual, and AB Studio 5000 PLC Source Code. See example drawings on page 4.
6. Full Stainless Steel System, weather protected pumps built to your custom site specifications, results in low cost installation combined with low long term

### D-2 Inc. provides JP-8 Additive Injection Systems. Real time control of Neat

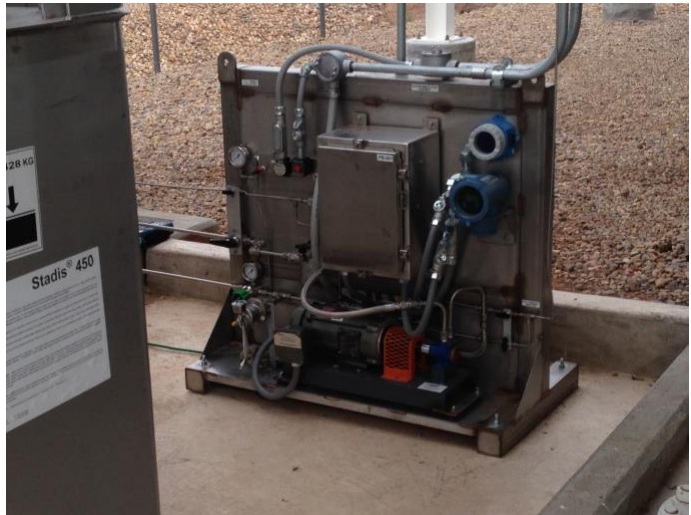
maintenance costs.

7. Conductivity measured safety circuit provided by ASTM D2624 approved real time direct measurement of conductivity.
8. Modular all Stainless Additive storage tanks provided maintain additive supplied with visual level and optional low level alarms connected directly to terminal systems to further prevent run dry incidents.
9. Fully ATEX or FM/ FMc Certified for use in Hazardous Zone Environments.
10. Optional In Line Conductivity Sensor JF-1A is ASTM D2624 Listed and ATEX/ FM Certified. Optional Item for real time monitoring of conductivity.
11. Custom injection nozzle prevent idle time flow out and ensure well mixed additive/product.
12. D-2 Inc. fully supports every system and provides a 1 year limited warranty from date of install, can provide on-site commissioning.
13. D-2 Inc. is a highly experienced firm with multiple AI-1 Injection systems operating globally with a perfect track record.

**AI-1 Injection System Photos:**

SDA / CI Injection System built 2014.

Real Time Additive Injection Solutions the future is meeting JP-8 MTL-DTD-83133 in one well built automated injection system.



Side view SDA / CI Injection System.

Below: JF-1A Conductivity Sensor

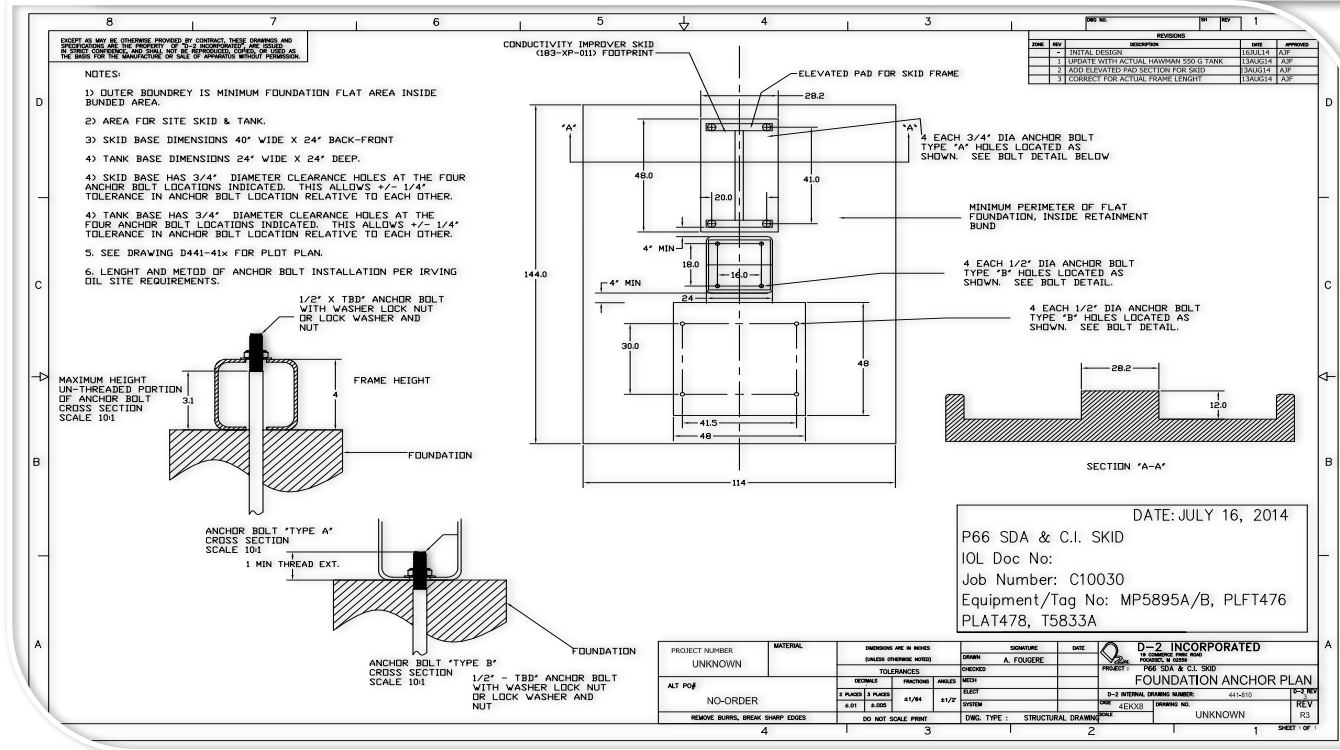
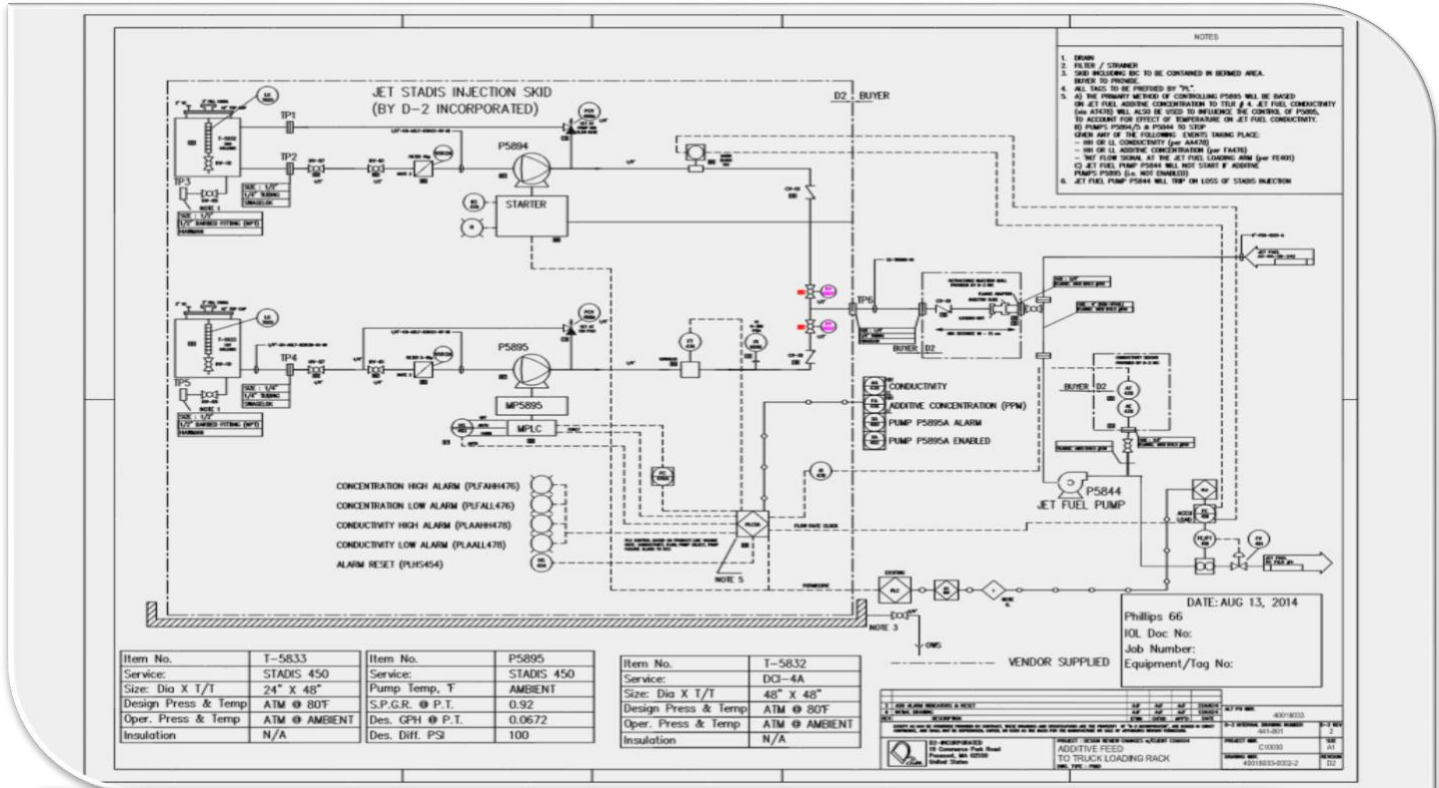


SDA / CI Injection System.



# Full Documentation Packages

Full PI&D Drawings Provided, Full Foundation Plans, and more, sample below:



# JP-8 Fuel Additive Injection System MIL-DTL-83133 SDA / FSII / CI

AI-1 Brochure

D-2 Incorporated  
23 Edgerton Drive, Suite A  
North Falmouth, MA 02556

[www.d-2inc.com](http://www.d-2inc.com)